



MONTHLY MEMBERSHIP PROGRESS REPORT

District 2 X1

Results as of: 3/31/2017

GMT: HAL GRIFFIN

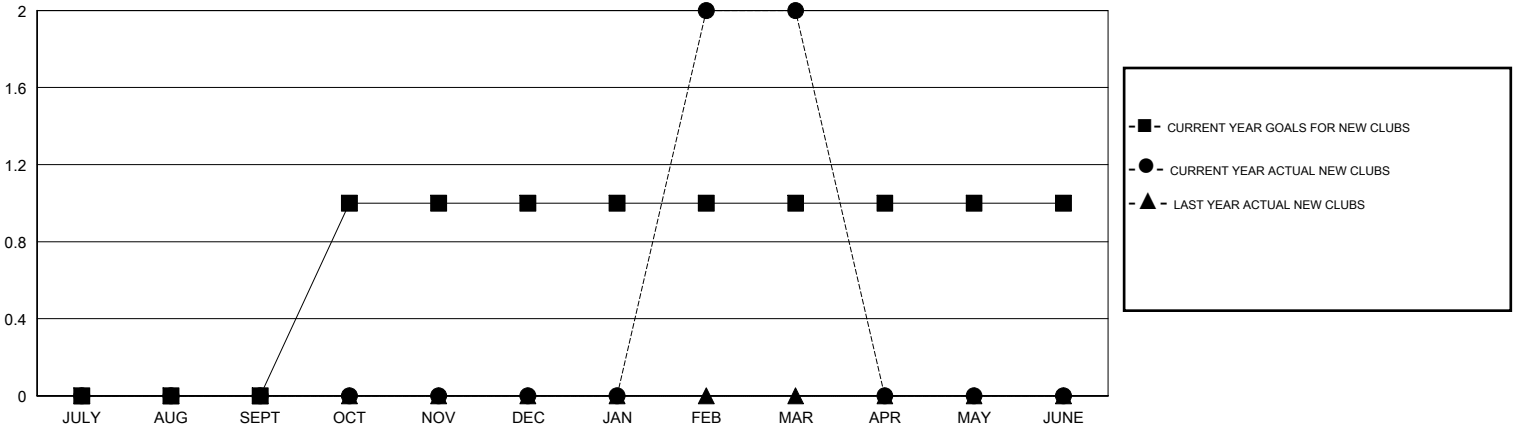
LOCATION TEXAS

GMT CA

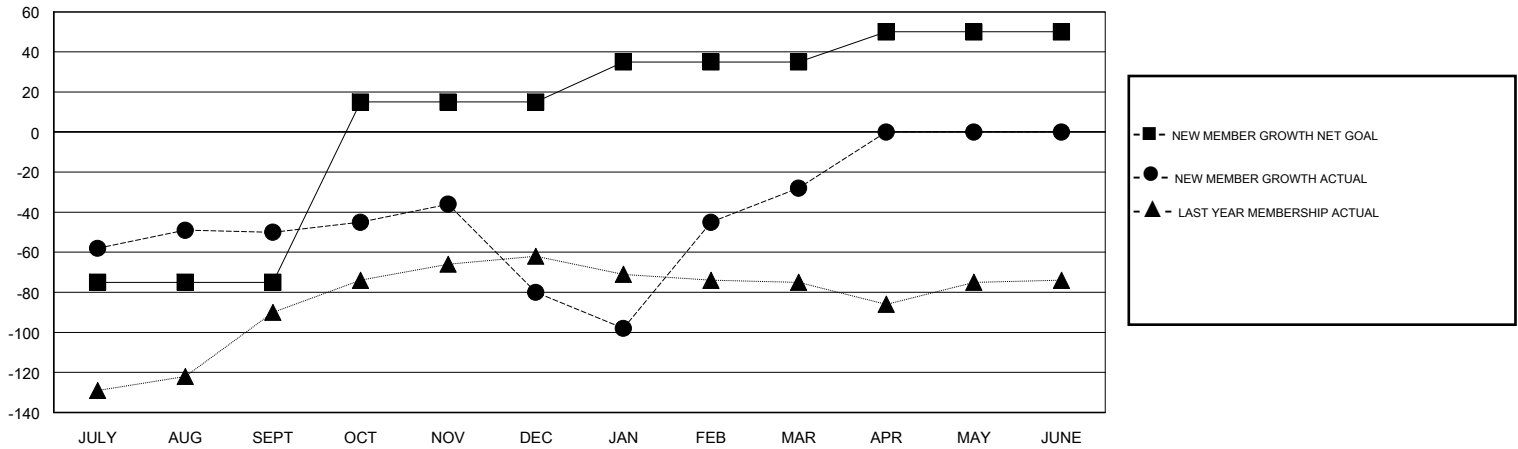
Clubs			
RESULTS FOR 2016-2017			
QUARTER	NEW CLUB GOAL	NEW CLUBS	DROPPED CLUBS
JULY/AUG/SEPT	0	0	0
OCT/NOV/DEC	1	0	1
JAN/FEB/MAR	0	2	0
APR/MAY/JUNE	0	0	0

Members			
RESULTS FOR 2016-2017			
QUARTER	NEW MEMBER GROWTH NET GOAL (not reinstated or transfers)	NEW MEMBER GROWTH ACTUAL (not reinstated or transfers)	DROPPED MEMBERS ACTUAL (including transfers)
JULY/AUG/SEPT	-75	55	105
OCT/NOV/DEC	90	44	74
JAN/FEB/MAR	20	138	86
APR/MAY/JUNE	15	0	0

GOALS AND ACTUAL NEW CLUBS CUMULATIVE



GOALS AND ACTUAL MEMBERS CUMULATIVE



DROPPED CLUBS: 1	38 CLUBS OF 63 ADDED 1 OR MORE NEW MEMBERS	<u>GENDER DISTRIBUTION</u>	
DROPPED MEMBERS		MALE	1,219 (67.35%)
DECEASED	CLICK HERE FOR CUMULATIVE MEMBERSHIP DATA	FEMALE	591 (32.65%)
CLUB CANCELLED		TOTAL FAMILY UNIT MEMBERS	314
OTHER		FAMILY MEMBERS PAYING HALF DUES	163
TOTAL		265	